

Understanding impacts on Great Lakes agriculture and water use under changing climate conditions

James Polidori and Amanda Grimm
Great Lakes Commission

Regional Body/Compact Council Science Team Meeting
January 27, 2026

Background

- GLC Policy Resolution: Understanding impacts to Great Lakes Agriculture and Water Use Under Changing Climate Conditions
- Support from The Joyce Foundation
- Regional Body/Compact Council Science Strategy

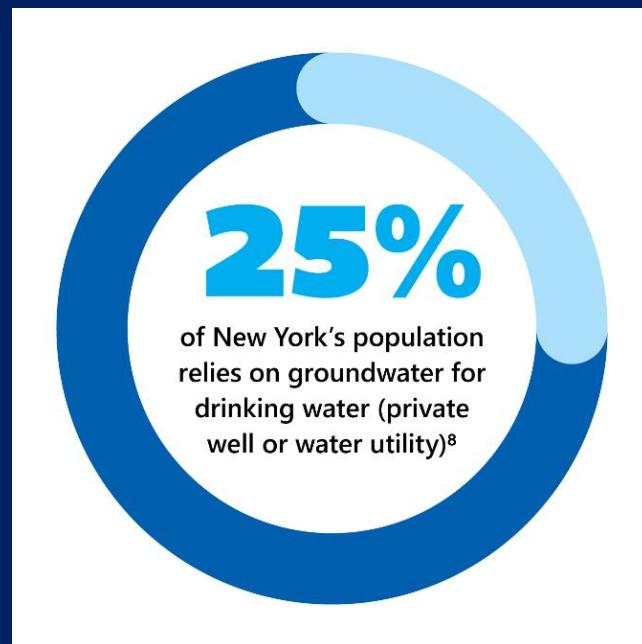
Agriculture in the Great Lakes Dashboard

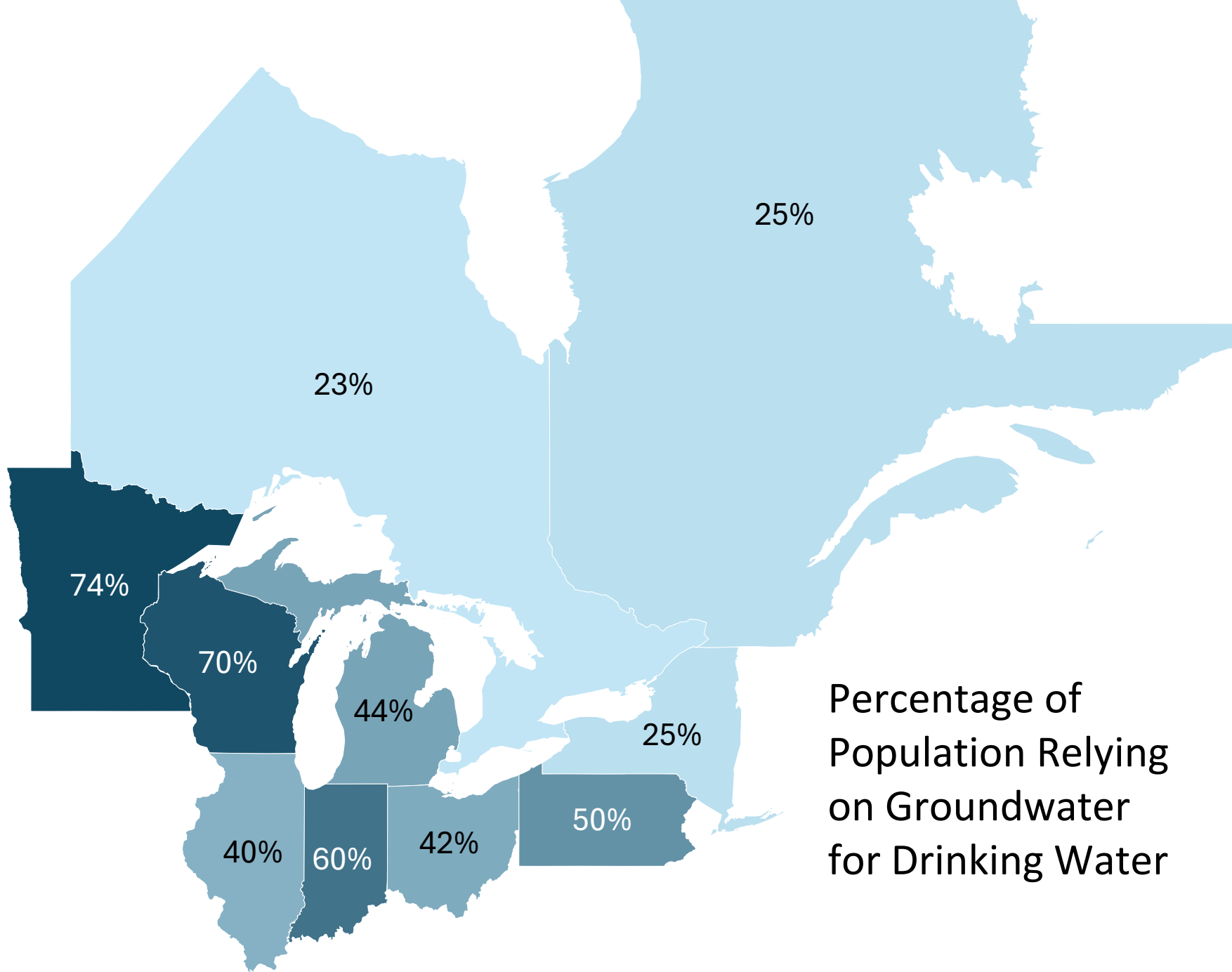
- Agricultural Commodities
- Watershed-scale patterns
- Climate change impacts

<https://aggrimm.github.io/charts/joyceag/pbidraft.html>

Groundwater Management Summaries

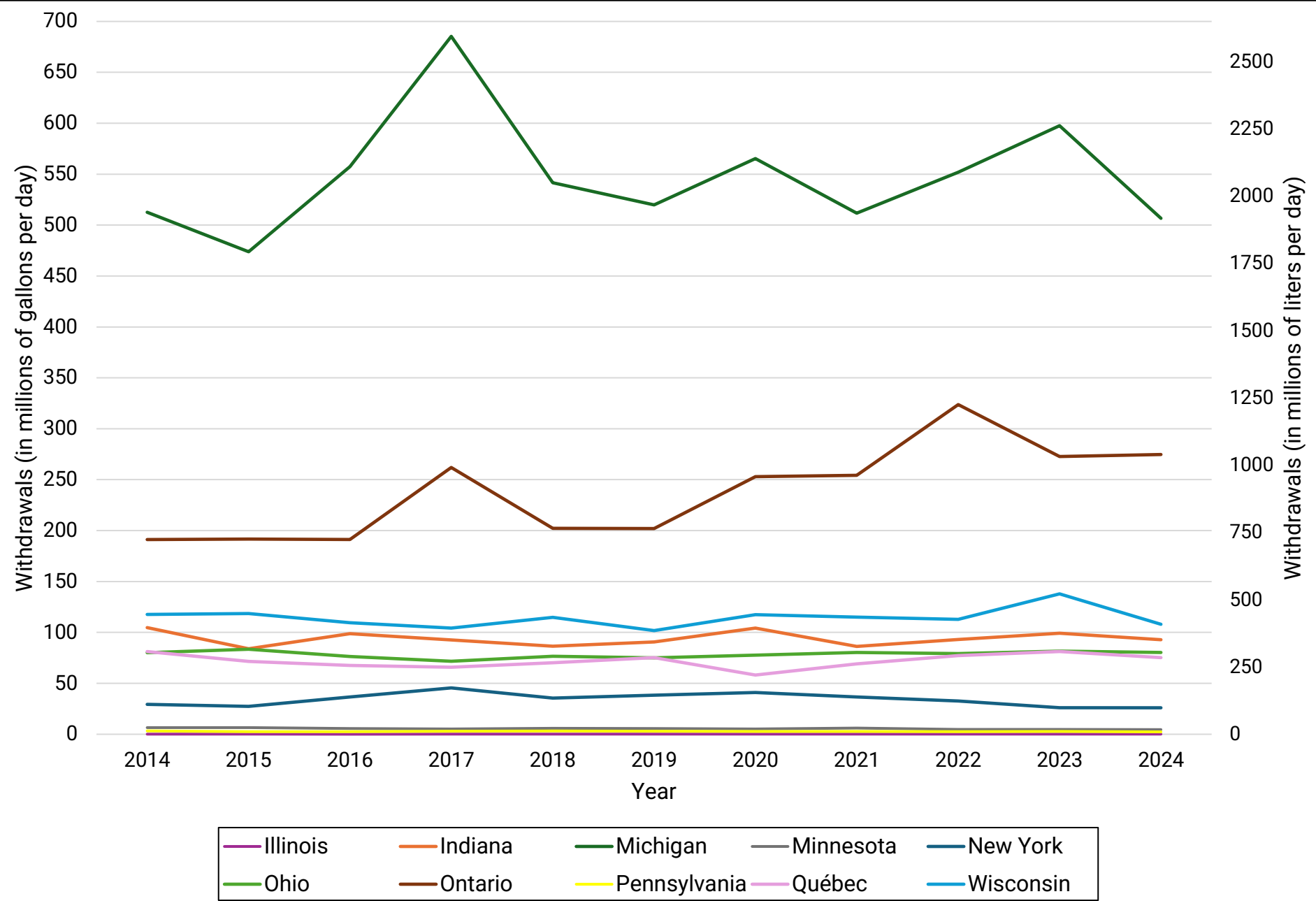
Agency	Pennsylvania Dept. of Environmental Protection	Pennsylvania Dept. of Conservation and Natural Resources
Groundwater Priority Area	Groundwater quality oversight	Groundwater availability
	Groundwater appropriation or permitting	Water well driller licensing
	Drinking water supply	PaGWIS database management
	Industrial contamination	
	High-capacity well impact investigations	
	State and regional water supply planning	





Percentage of
Population Relying
on Groundwater
for Drinking Water

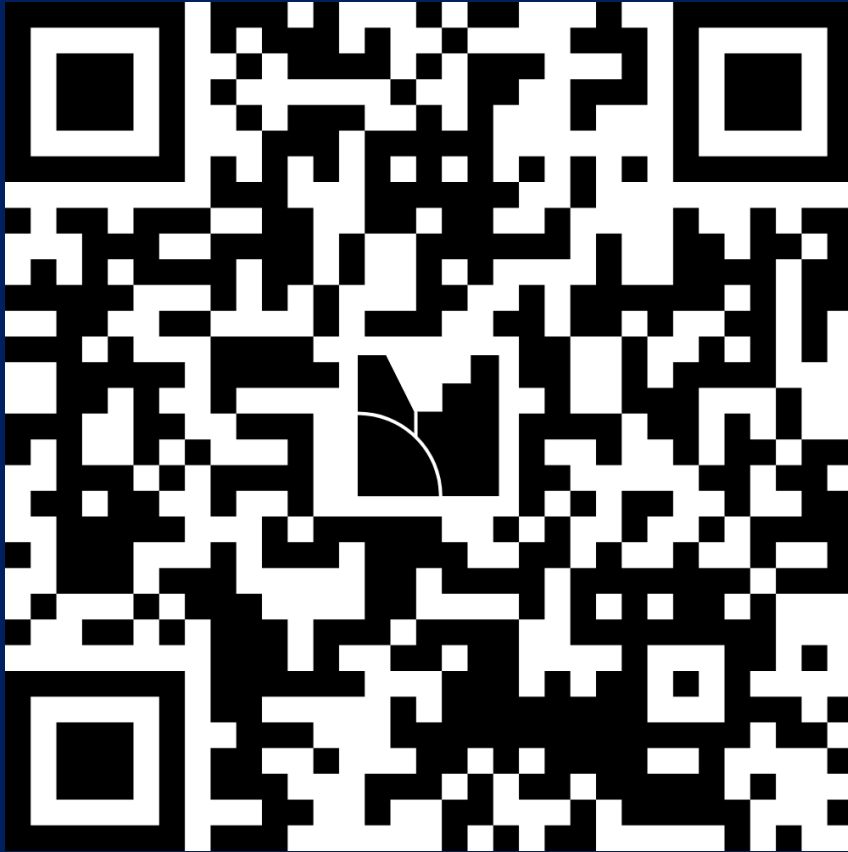
Great Lakes-St. Lawrence River Basin Groundwater Withdrawals from 2014-2024 (As reported to the Great Lakes Regional Water Use Database).



Future Work

- Joyce funding Phase II
- Refining agricultural water use
- Advancing non-potable water reuse
- GLC Policy Resolution: Non-Potable Water Reuse Development in the Great Lakes Basin

Mentimeter Poll



- Scan the QR code or
- Go to menti.com and type in the code:

3156 9730

Questions?